

Evolution: The Enemy of Truth and Science

Dr. Jay L. Wile

- Ph.D. in Nuclear Chemistry from the University of Rochester
- University Professor From 1990 - 1995
- NSF-Sponsored Scientist with More Than \$200,000 In Research Grants
- More than 30 articles in the peer-reviewed journals of Nuclear Chemistry
- Currently writes junior high and high school science curriculum for homeschoolers.

The History of Evolution is filled with lies

- Evolutionists MUST lie, because the facts *do not* support their case.
- Evolutionists cannot allow competing ideas, because their case is so weak.
- Because they continually lie about the data and squelch competing ideas, these evolutionists are *the enemy* of truth and science

Biogenetic Law: One of Evolution's Older Lies

Ernest Haeckel noticed similarities between certain embryos. Based on that, he decided that an embryo goes through its evolutionary stages as it develops. He formulated the "biogenetic law," which he stated as "ontogeny recapitulates phylogeny." To bolster his argument, he published several drawings.

As time went on (by 1874), it became clear that Haeckel's illustrations were doctored. The whole idea is so appealing to evolutionists, however, that the fraudulent nature of the data was overlooked. It took nearly 100 years (until 1997 when an international team of experts met to analyze the drawings, comparing them to photos of embryos) for the scientific community to admit the fakes!

"It looks like it's turning out to be one of the most famous fakes in biology"
- Michael Richardson (a member of the panel)

Ref: Wells, Jonathan, *Icons of Evolution*, pp. 81-109 quote from pages 92

The Biogenetic Law still lives today!

Although the biogenetic law has finally been denounced by the scientific community, versions of the law still exist today. For example, you still see diagrams saying that human embryos have "gill slits," a "yolk sac," and a "tail."

No matter how “watered down” you make the biogenetic law, it is STILL WRONG!

The “gill slits” in human embryos have *nothing* to do with respiration. They develop into the thymus gland, the parathyroid glands, and the middle ear canals.

The “yolk sac” in human embryos has *nothing* to do with food. It is the site of the first blood cell formation. Physiology demands that it be separate from the rest of the embryo.

The “tail” becomes the coccyx, which is a site of muscle attachment.

Ref: Oram, Raymond, *Biology - Living Systems*, Merrill Publishing, 1989, p203

Rager, Gunter, Human Embryology and the Law of Biogenesis, *Rivista di Biologica* **79**: 449-465 (1986)

“The so-called basic law of biogenetics is wrong. No buts or ifs can mitigate this fact. It is not even a tiny bit correct or correct in a different form. It is totally wrong.” [Blechsmidt, E., *The Beginnings of Human Life*. Springer-Verlag, New York, p. 32 (1977)]

Despite the fact that by 1977, the biogenetic law was completely repudiated, it still appears in textbooks, museums, and popular writings.

Out of the 10 most popular high school biology textbooks published AFTER 1998 *all* contain the biogenetic law. **8 of them use Haeckel’s OWN DRAWINGS!** [Wells, Jonathan, *Icons of Evolution*, pp. 249-258]

“We do, I think, have the right to be both astonished and ashamed by the century of mindless recycling that has led to the persistence of these drawings in a large number, if not a majority, of modern textbooks.” -S. J. Gould [Wells, Jonathan, *Icons of Evolution*, p. 109]

Pitdown Man: A Fake Fossil

Amateur fossil-hunter Charles Dawson brought some fossils to the British Museum in 1912. They consisted mostly of teeth, part of a jaw, and a brain case. Paleontologists immediately declared it was a new “missing link” between ape and human. It was touted as definitive “proof” of evolution. It was determined by 1953 that the jaw was from a normal ape and had been stained to look old. Also, the teeth had been filed to make them look like a cross between human and ape. The staining job was quite bad and the teeth were so badly filed that there were scratches and sharp edges. Why did the forgery survive for 40 years? Because evolutionists **needed** it!

Ref: Gould, S. J., *The Panda’s Thumb: More Reflections on Natural History*. New York: Norton, pp. 108-124 (1980)

Fake Fossils Are Still Being Made!

On October 15, 1999, the National Geographic Society announced the discovery of a fossil called *Archaeoraptor liaoningensis*. This fossil find was announced as "proof positive" that dinosaurs evolved into birds. According to the *National Geographic*, the fossil "...is a true missing link in the complex chain that connects dinosaurs to birds. It seems to capture the paleontological 'moment' when dinosaurs were becoming birds." [National Geographic Society press release of October 15, 1999, contact persons Barbara Moffet and Ellen Siskind]

One of the *original* interpreters of the fossil (Xu Xing) returned to China to find the other half of the fossil. When he went to find the other half, he discovered that what he had examined and interpreted was, in fact, *a deliberate mixture of fossils from a true dinosaur and a true bird!*

"Red-faced and downhearted, paleontologists are growing convinced that they have been snookered by a bit of fossil fakery from China. The 'feathered dinosaur' specimen that they recently unveiled to much fanfare apparently combines the tail of a dinosaur with the body of a bird..." R. Monastersky

National Geographic printed a short retraction in the UNINDEXED part of its magazine.

Ref: Monastersky, R., All mixed up over birds and dinosaurs, *Science News* **157**:38, January 15, 2000

Why Are Fake Fossils Readily Accepted?

Evolutionists NEED THEM. The fossil record doesn't show a single evolutionary transition, and most "transitional forms" are so close to one of the species they are trying to link, that their value as evidence for evolution is near zero. Darwin noted this as a MAJOR PROBLEM.

"Geological research, though it has added numerous species to existing and extinct genera, and has made the intervals between some few groups less wide than they otherwise would have been, yet has done scarcely anything in breaking the distinction between species, by connecting them together by numerous, fine, intermediate varieties; and this not having been affected, is probably the gravest and most obvious of all the many objections which can be raised against my views." [Darwin, C., *The Origin of Species*, Collier Books, NY, p.462 (1962)]

It's worse NOW than in Darwin's time!

- "Well, we are now about 120 years after Darwin, and knowledge of the fossil record has been greatly expanded...ironically, we have *even fewer examples* of evolutionary transition than we had in Darwin's time. By this I mean that some of the classic cases of Darwinian change in the fossil record, such as the evolution of the horse in North America, have had to be discarded or modified as the result of more detailed information." [Raup, D., *Field Museum Bulletin* January, 1979]

- In fact, the most fashionable model of evolution right now is *punctuated equilibrium*. In this model, evolution occurs in rapid spurts among small populations, followed by long periods of stasis. This theory has been proposed and accepted specifically to account for the lack of transitional forms.

Ref: The best source of information on the lack of transitions in the fossil record is Denton, Michael, *Evolution: A Theory in Crisis*, Adler & Adler (1985)

Human Evolution: A Non-Sequence

Everyone has seen the figure that starts with a chimp-like creature and ends with a human, with several intermediates in between. It is ingrained in us from a very early age. People assume there is strong fossil evidence to back up this kind of picture. They are, of course, wrong, and evolutionists will never reveal that to the general public.

The first problem: There are only a TINY number of fossils:

- “The primary scientific evidence is a pitifully small array of bones from which to construct man’s evolutionary history. One anthropologist has compared the task to that of reconstructing the plot of *War and Peace* with 13 randomly-selected pages.” [Holden, Constance, *The Politics of Paleoanthropology*, *Science* **213**: 737-740 (2000)]
- “To take a line of fossils and claim that they represent a lineage is not a scientific hypothesis that can be tested, but an assertion that carries the same validity as a bedtime story-amusing, perhaps even instructive, **but not scientific.**” [Gee, H., *In Search of Deep Time*, The Free Press, New York, pp. 116-117]

Second Problem: There fossils can be WIDELY interpreted

National Geographic asked four artists to reconstruct a female based on one of the skulls which paleontologists believe are a part of the human lineage.

- One drew a picture that looked like an African American woman with rather long arms.
- One drew a thin woman with long arms and a face that looked like a werewolf
- One drew a creature whose gender was not apparent. It had a face that looked much like a beaked dinosaur
- One drew a hairy creature with a gorilla-like face climbing a tree.

Ref: Behind the Scenes, *National Geographic* **197**: 140 (2000)

The third problem: There is no agreement among evolutionists

Marvin Lubenow, college professor, each year assigns his students the fossils that are (currently) a part of the human evolutionary tree. He simply asks the students to take a fossil, spend a minimum of eight hours of research, use only evolutionist sources, and determine the age of the fossil and where it is in the human evolutionary lineage. Each year the students find:

- They cannot report the age, category, or both because the evolutionary sources disagree.
- The morphology of the fossil is often ignored because of the date. For example, Australian fossils that by the evolutionists' own admission look like Java *Homo erectus* are classified as *Homo sapien* because they are dated at only a few thousand years old.
- The fossils cannot be put in any kind of evolutionary lineage

“It is no accident that evolutionist books seldom include charts listing [everything in the human line]. For example, one of the more recent texts (1989) on the human fossils is by University of Chicago professor Richard G. Klein. In his 524-page work, Klein has 20 different charts dealing with various aspects of the human (hominid) fossil record. Yet, there is no way a student could get the over-all picture. The student would simply have to accept by faith Klein's thesis that the fossils demonstrate human evolution. The one chart...showing all of the relevant fossil material [and the lineage]--- is not to be found anywhere. By this type of omission, the true nature of the human fossil record continues to be the best-kept secret in modern paleoanthropology.”

Ref: Lubenow, M., *Creation Ex Nihilo* **15**: 10-13 (1993)

Certain Proteins Exist in All or Mostly all Organisms. Their Amino Acid Sequences Differ Slightly, Because They Must Be Specially Tuned to Each Organism’s Unique Chemistry.

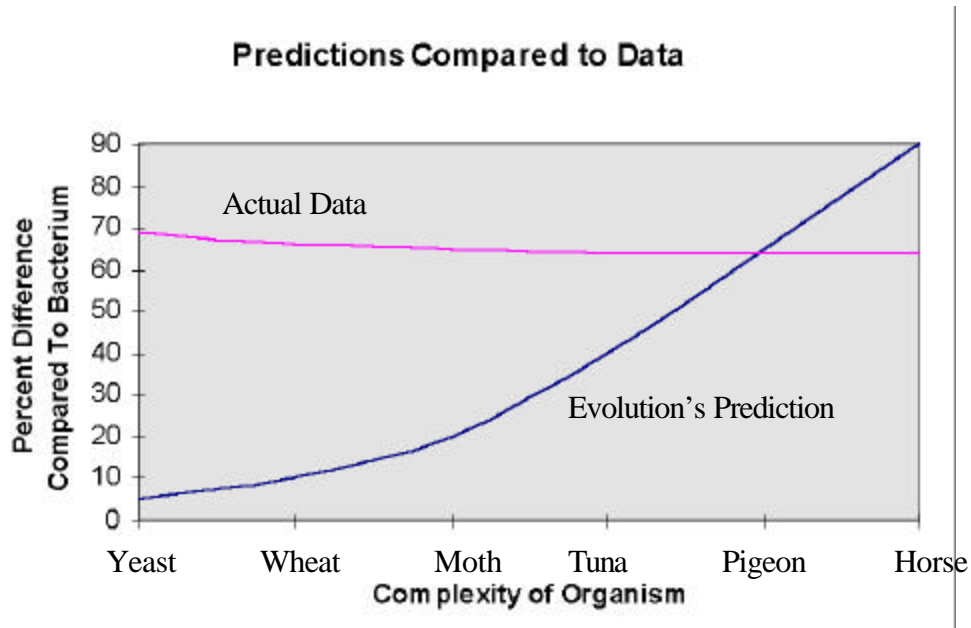
Partial Cytochrome C Sequences For Different Organisms

Horse	Gly-Leu-Phe-Gly-Arg-Lys-Thu-Gly-Glu(NH ₂)-Ala-Pro
Kangaroo	Gly- Ile - Phe-Gly-Arg-Lys-Thu-Gly-Glu(NH ₂)-Ala-Pro
Human	Gly-Leu-Phe-Gly-Arg-Lys- Thr -Gly-Glu(NH ₂)-Ala-Pro
Chicken	Gly-Leu-Phe-Gly-Arg-Lys- Thr -Gly-Glu(NH ₂)-Ala- Glu
Tuna	Gly-Leu-Phe-Gly-Arg-Lys- Thr -Gly-Glu(NH ₂)-Ala- Glu
Moth	Gly- Phe-Gly-Arg-His-Thr-Gly-Glu (NH ₂)-Ala- Pro-Gly
Yeast	Gly- Ile - Phe-Gly-Arg- His-Ser -Gly-Glu(NH ₂)-Ala- Glu

The percent difference between these sequences is directly related to the differences between the corresponding portions of DNA.

Cytochrome C Is A Protein That Exists In Most Organisms

From an evolutionary point of view, Cytochrome C exists in nearly every organism. Because it is such a fundamental protein, it was in the first, “simple” life form. Since, according to evolution, this life form was ancestral to all life forms, organisms inherited the portion of DNA that codes for Cytochrome C from this “simple” ancestor.



Ref: Denton, Michael, *Evolution: A Theory in Crisis*, Adler & Adler, pp. 274-307 (1986)

This Data is So Damaging That Evolutionists Lie About It!

The Cytochrome C of a human compared to SPECIFIC SPECIES:

Rhesus monkey	1%
Rabbit	9%
Horse	12%
Tuna	20%
Screw Worm	25%
Wheat	38%
Yeast	41%
Bacterium	65%

This data, used by evolutionists, is a highly selective view. It represents the trend of less than 1% of the data.

When the Data Don't Agree, You Can Also Cover Them Up!

In 1909, Charles Walcott was on a fossil dig. As the director of the Smithsonian, he was well-versed in evolution and a fervent believer. He was digging in Cambrian rock, which is supposedly 550 million years old. He was surprised to see complex fossils in this rock.

He found representatives from *every* major animal phylum. He found every basic body plan of living organisms in this “ancient” rock.

The problem is, that's not how it was supposed to be! The geological column said that Cambrian rock is supposed to contain only simply invertebrates. The more complex invertebrates did not appear for another 100 million years, and it would take an addition 40 million years after that to make the simplest marine vertebrates.

These fossils presented 2 problems:

- The “geological column” was considered gospel truth. These fossils showed it to be wrong!
- There was no way “simple” invertebrates could have evolved into the myriad of body plans he found in just a few tens of millions of years

Walcott had uncovered data that was **REVOLUTIONARY**

What did he do with the data? He hid it in his lab for almost 80 years until it was rediscovered by a graduate student! Walcott's Fossils, **60,000 in all**, demonstrate what evolutionists call the “Cambrian Explosion.” It is a mystery in evolution.

“Authors of high school textbooks and even introductory courses in biology still ignore these data. In the college classes I teach, I regularly encounter students who are being taught the tale of invertebrates gradually evolving into vertebrates. At \$15,000 per year tuition, that's an expensive error.”
[Schroeder, Gerald L., *The Science of God*, Broadway Books, New York, p. 39 (1997)]

More Data That is Being Covered Up

For 20 YEARS, the data from Mount St. Helens has been available. NO general textbook talks about it! This data includes:

- Stratified Rock that formed in 5 hours.
- A canyon that was formed in a day.

Ref: *Mt. St. Helens: Explosive Evidence for Catastrophe*, Institute for Creation Research (1995)

Evolutionists Don't Reserve Their Lies Only for Data!

“Is life... a product of chance - some fundamentally ‘lucky’ event that happened only because so much time was available? (Given enough time, you will eventually flip 100 heads in a row, however improbably it might be in any one trial.)” [Gould, S.J., et al. *A View of Life*, Benjamins/Cummings, Menlo Park, CA, p. 689 (1981)]

In fact, the chance of this happening is: 1 in 10^{30} . If you flipped a coin once each second 24 hours a day, it would take 40 billion times the “accepted” age of the universe to get that result!

Evolutionists Also Squelch Competing Ideas

- The Tangipahoa Parish Board of Education (Louisiana) required teachers to read a statement which, in part, said that students were to “exercise critical thinking and gather all information possible and closely examine each alternative toward forming an opinion regarding the origin of life and matter.” Federal courts, on the urging of evolutionists, outlawed this statement. [*First Things* **112**: 20-22 (2001)]
- High School Teacher Rodney LeVake was demoted and reassigned because he discussed data that contradicts evolution in class. [*Evangelical Press News Service*, 6-11-1999]
- A professor of biology at San Francisco State University was forbidden to teach the introductory biology that he had been teaching for more than a decade because he began stressing the design elements that are prevalent in the world around us. The biology department thought that this would “confuse” students when they later reached a course on evolution, so they forbade him to teach that course. [Constance Holden, *Science* **262**:1976-77 (1993).]
- Dr. Kevin Haley, who holds a Ph.D. in biology from Purdue University, had been teaching science at Central Oregon Community College in Bend, Oregon since 1996. His former department chairman called Dr. Haley "an excellent teacher." In evaluations written by his students, it appears that he was one of the most popular--as well as challenging--instructors at the college. He was fired because he refused to state in class that evolution is a fact!
[<http://www.answersingenesis.org/docs/4227news2-25-2000.asp>]
- At Baylor University, The Michael Polanyi Center was formed to do research on the conceptual nature of science. When the center sponsored an international conference which included two Nobel laureates, the faculty senate voted to shut it down, because the William Dembski, the center's director, was one of the founders of the “intelligent design” view of biology. Although the center is not yet closed, the faculty senate is exerting great pressure on the president to shut it down. [*Houston Chronicle*, 7-3-2000, p. 1]
- Forrest M. Mims had written some freelance articles for *Scientific American* in 1990. When he applied for a full-time position, he was not hired because he was a creationist. Nevertheless, *Scientific American* admitted that his work was “fabulous,” “great,” “first rate,” and “should be published somewhere.” [Science's Litmus Test (telephone transcript of conversation between F. Mims and Jonathan Piel, the Editor of *Scientific American*), *Harper's Magazine* March 1991]